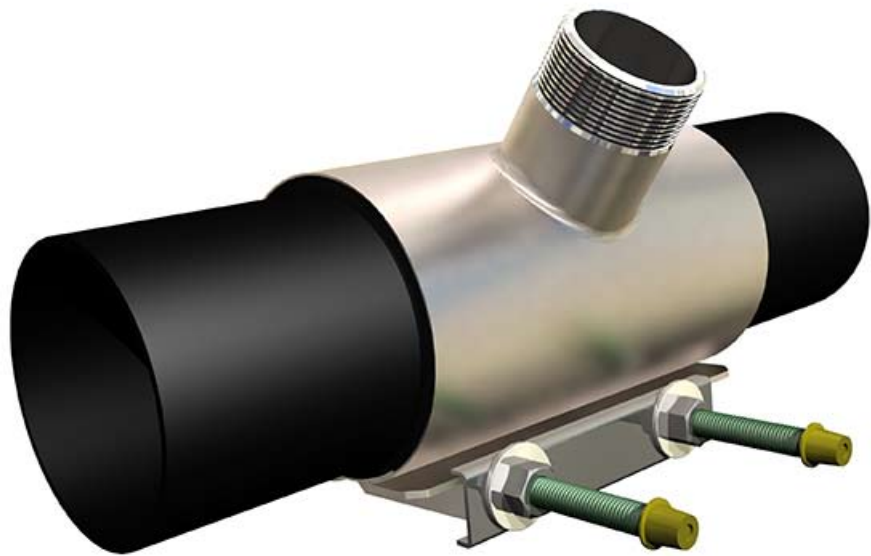


Tigerholm

AN SPX BRAND

NoTap Hot Tapping method



SPX®

Quick and easy

10 good reasons to use NoTap

1. No need to drain the system.
2. No refilling or venting the system after work is completed.
3. Easy installation as no soldering, cutting or welding is necessary.
4. Can be used on all types of metal piping: black steel, painted steel, galvanised, stainless and even copper.
5. Saves energy, as no hot water needs to be drained.
6. Can be used for hot water, fresh water, compressed air and refrigerants (glycol and salt based solutions).
7. Eliminates problems associated with the use of heating equipment, such as welding, soldering, etc.
8. Less corrosion in the system as no fresh, oxygen-rich water is added.
9. Method is environmentally friendly, as no hazardous water needs to be drained.
10. No fragments from drilling operations will enter into the system.



Cost effective

Advantages for the contractor

- The job time is reduced considerably
- Better profitability as more jobs can be carried out within a given time period
- Solves problems that are otherwise difficult to manage
- Can offer customers better service and solutions
- No need to handle chemicals when modifying cooling systems

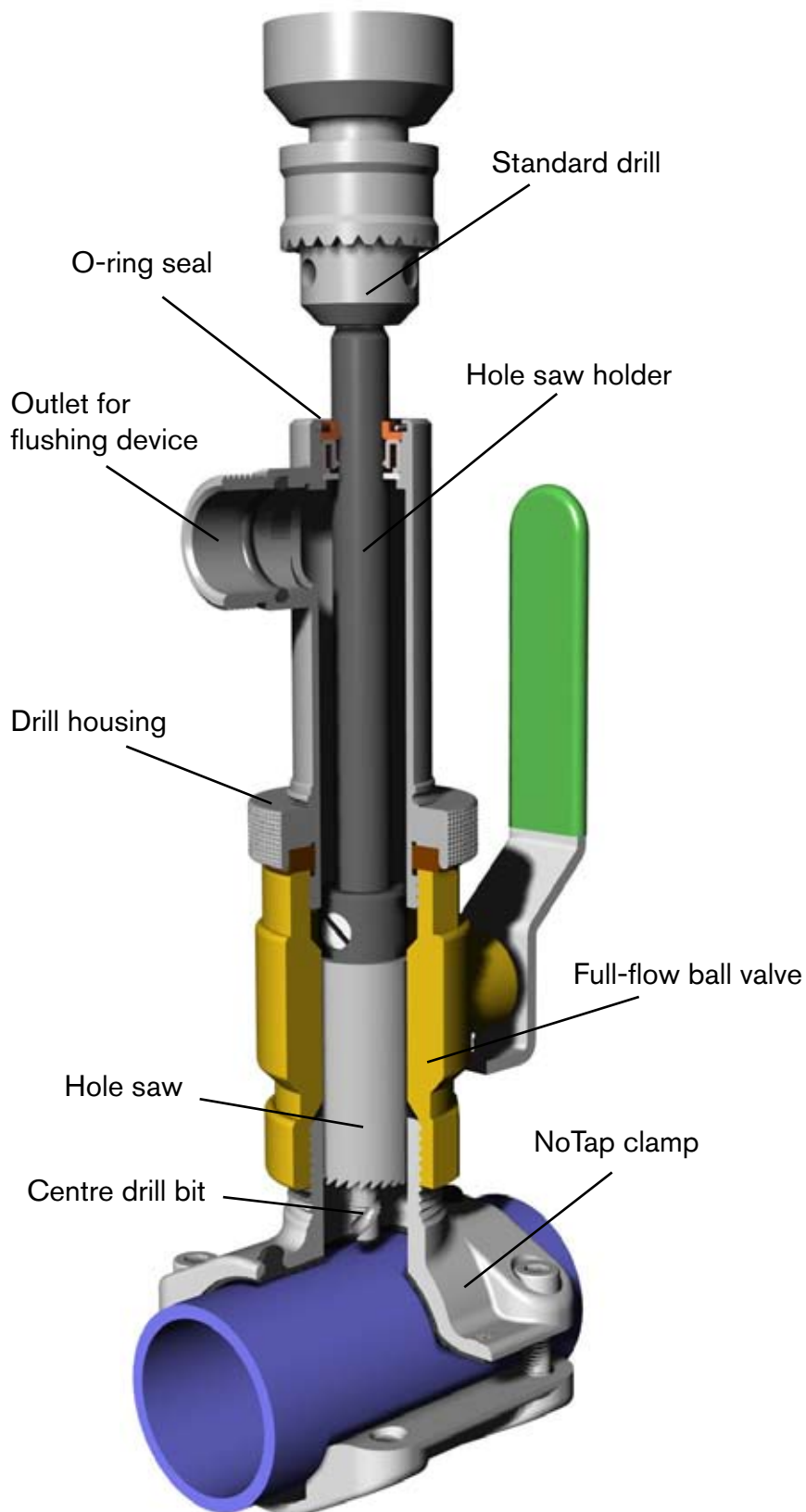


Advantages for the property owner

- Tenants are not disturbed during pipe work
- Tradesmen in the building are able to carry on their operation despite the pipe work (dentists, hospitals, airports, etc.)
- Lower installation costs
- Work can be carried out during normal business hours eliminating the need for costly weekend or after hour work
- Less corrosion in the water system for increased life expectancy of the system
- Reduced risk for water damages due to faucets left open
- Environmentally friendly



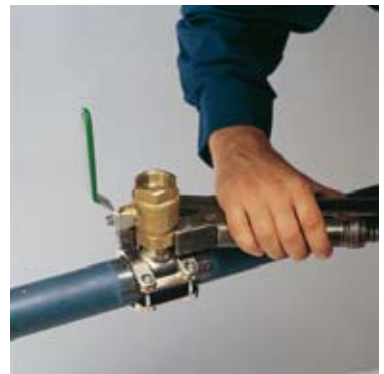
Branch connection in 4 simple steps



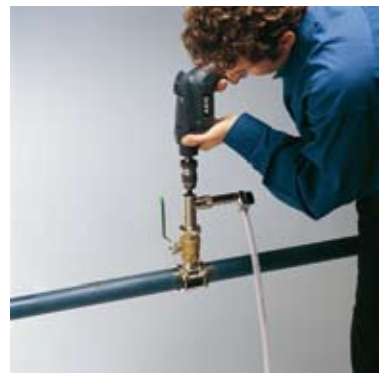
1. Mount NoTap clamp



2. Install full-flow ball valve



3. Drilling with NoTap



4. Make branch connection



Technical Data

Max system pressure: 16 bar (10 bar on pipe dims. above DN 150)

Max Temp: 95° C (105° C on branch outlets DN40 and larger)

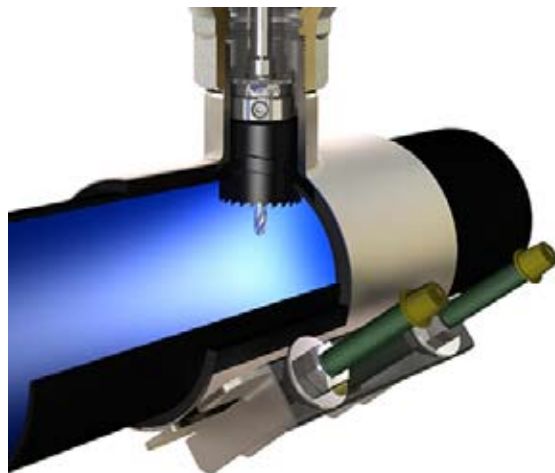
Min Temp: -10° C

Technical ingenuity

Drilling hole to ensure proper flow

The first step in making your branch connection with NoTap is to choose a clamp with the desired size outlet. Clamps are available for pipes from 26 - 335 mm OD. The outlet size varies depending on pipe size. Outlets available are 1", 1½", 2" and 2 ½". See tables on pages 6-7 for available sizes.

The NoTap method combines a centre drill bit with a hole saw. Once the centre drill bit penetrates the pipe, a flow will start to run through the tooling and out through the flushing device. This will ensure that chips and pipe shavings are carried away from the flow inside the pipe.



Next, the hole saw will start to cut through the pipe. The hole saw will cut through the pipe and also other layers of deposits that might be coated to the inside of the pipe. Using a hole saw will ensure that a proper hole is opened in the pipe for desired flow. The threaded centre drill bit drills itself into the portion of pipe that is cut out. This way the cut out portion of pipe is always retained (not lost in the pipe system).



Threading

When the hole saw has penetrated the pipe, simply retract (pull back) the drill until it stops. Then close the ball valve as shown in the picture. Finally, unscrew the drill housing from the ball valve and make the necessary branch connection.

When the job is finished, it is always a good idea to disassemble the NoTap tooling and dry it off for future use.



Clamps give flexibility

NoTap clamps can be used on all types of steel

K1 clamps are manufactured in brass, which means the same clamp can be installed on stainless steel, galvanised steel, mild steel, painted steel and even copper. The clamps can also be used on certain types of PVC plastic (ask the factory for more info.). Even NoTap big clamps can be used on these same materials due to the rubber seal, which acts as a barrier between the pipe and the clamp.



Odd pipe sizes? No problem with NoTap!

NoTap is very often used for renovating or building onto to existing pipe systems. Many older pipes have odd pipe diameter dimensions. This is not a problem for NoTap as our unique clamp design allows each clamp to cover a dimension range.

Example

K1 Clamp for DN25 / Cu 35 pipe.
Covers pipes with OD 33 - 38 mm
See all clamp dimension tables on pages 6 and 7.



Tiger Connect toolkit

For branch connections on pipes with OD 26 mm to 335 mm

The Tiger Connect toolkit contains complete equipment for making branch connections on pipes with outer diameter OD 26 - 335 mm. Branch connections can be made with outlets of 1", 1 1/2", 2" and 2 1/2". Refer to pages 6 and 7 for dimension tables.

There are other toolkits available as shown on our website at: www.tigerholm.com



K1 Clamps for 1" ball valve outlet



K1 Clamps sold without ball valves

Suitable for pipes with outside diameter from 26 mm to 170 mm.

Article No.	Pipe diameter OD min/max	Main dimension	Branch outlet
1403028E-02	26 - 32	DN20Cu 28	DN25
1403035E-02	33 - 38	DN25/Cu 35	DN25
1403042E-02	39 - 45	DN32/Cu 42	DN25
1403048E-02	46 - 51	DN40	DN25
1404054E-05	50 - 58	Cu 54	DN25
1404060E-05	55 - 65	DN50	DN25
1404068E-05	61 - 75	Cu 70	DN25
1404076E-05	74 - 83	DN65/Cu 76,1	DN25
1404083E-05	77 - 88	77-88	DN25
1404089E-05	85 - 98	DN80/Cu 88,9	DN25
1404102E-05	94 - 111	Cu 100	DN25
1404114E-05	108 - 125	DN100/Cu 108	DN25
1404129E-05	122 - 138	Cu 133	DN25
1404140E-05	136 - 152	DN125	DN25
1404152E-05	145 - 160	Cu 159	DN25
1404168E-05	158 - 170	DN150	DN25

NoTap Big Clamps for 1 1/2" ball valve outlet



NoTap Big Clamps sold with ball valves

Suitable for pipes with outside diameter from 54 mm to 165 mm.

Article No.	Pipe diameter OD min/max	Main dimension	Branch outlet
146054E-01	54 - 58	Cu 54	DN40
146060E-01	60 - 67	DN50	DN40
146063E-01	63 - 70	Cu 70	DN40
146065E-01	75 - 82	DN65/Cu 76,1	DN40
146070E-01	82 - 89	DN80/Cu 88,9	DN40
146080E-01	88 - 95	DN80/Cu 88,9	DN40
146099E-01	112 - 135	DN100	DN40
146130E-01	145 - 165	Cu 159	DN40

NoTap Big Clamps for 2" ball valve outlet



NoTap Big Clamps sold with ball valves

Suitable for pipes with outside diameter from 70 mm to 134 mm.

Article No.	Pipe diameter OD min/max	Main dimension	Branch outlet
146064E-01	70 - 77	Cu 70	DN50
146066E-01	75 - 82	DN65/Cu 76,1	DN50
146071E-01	82 - 89	DN80/Cu 88,9	DN50
146081E-01	88 - 95	DN80/Cu 88,9	DN50
146085E-01	95 - 102	Cu 100	DN50
146090E-01	102 - 112	Cu 108	DN50
146100E-01	112 - 134	DN100	DN50

NoTap Big Clamps for 2 1/2" ball valve outlet



NoTap Big Clamps sold with ball valves

Suitable for pipes with outside diameter from 88 mm to 335 mm.

Article No.	Pipe diameter OD min/max	Main dimension	Branch outlet
146082E-01	88 - 95	DN80/Cu 88,9	DN65
146086E-01	95 - 102	Cu 100	DN65
146091E-01	102 - 112	Cu 108	DN65
146101E-01	112 - 134	DN100	DN65
146125E-01	133 - 155	DN125/Cu 133	DN65
146132E-01	145 - 165	Cu159	DN65
146150E-01	168 - 188	DN150	DN65
146170E-01	190 - 210	204	DN65
146200E-01	215 - 235	DN200	DN65
147225E-01	251 - 271	251/271	DN65
146250E-01	272 - 292	DN250	DN65
146270E-01	292 - 315	292/315	DN65
146300E-01	315 - 335	DN300	DN65

SPX Tigerholm Products AB, Bryggavägen 113, 178 31 Ekerö, Sweden

Phone: +46 8 560 340 30 Fax: +46 8 560 342 60

E-mail: tigerholm.se@processequipment.spx.com

For more information about our worldwide locations, approvals, certifications, and local representatives, please visit www.tigerholm.com.

SPX Corporation reserves the right to incorporate our latest design and material changes without notice or obligation.

Design features, materials of construction and dimensional data, as described in this bulletin, are provided for your information only and should not be relied upon unless confirmed in writing.

Issued: 01/2009 Copyright © 2008 SPX Corporation

