

# QUICK INSTRUCTION - Branch Connection - Clamp Type K1 & NoTap Big

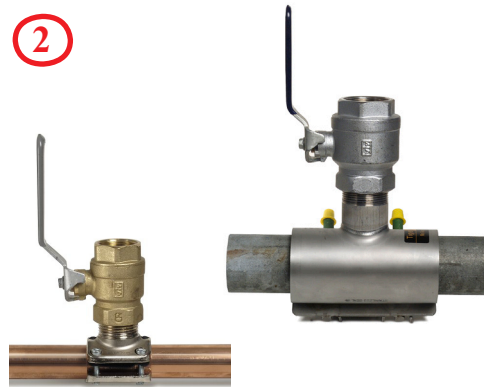
## Clamp without non-return valve

1



1. Clean pipe thoroughly where the clamp seal is to be placed.
2. Install a clamp without non-return valve in the correct dimension and wind with long-fibre and jointing compound.

2

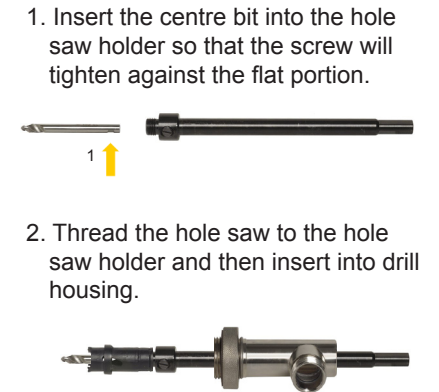


1. Thread tight a 1" up to 2-1/2" full-flow valve and leave it in open position.

3



4



1. Insert the centre bit into the hole saw holder so that the screw will tighten against the flat portion.
2. Thread the hole saw to the hole saw holder and then insert into drill housing.

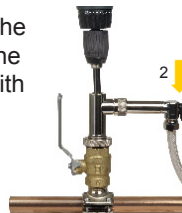
5



1. Tighten the drill housing to the ball valve and attach the flushing device to the drill housing.
2. Insert drill shank so the centre bit is touching the pipe. Tighten drill chuck to drill shank.

6

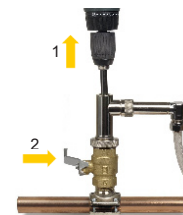
1. Drill with low rotation speed (approx. 200 rpm) and steady pressure.
2. A flow will start when the centre bit penetrates the pipe. Adjust the flow with the valve.



3. Drill until hole saw has penetrated the pipe.

7

1. Stop drilling when the hole saw has penetrated the pipe and pull out the drill shank completely.
2. Close the ball
3. Remove drill and flushing device. Then remove drill housing.



8

1. Loosen centre bit and remove centre bit and the piece of pipe.
2. Tighten centre bit in place again.
3. Empty the flushing device of burrs that have collected in the filter.



NoTap

Tigerholm

AN SPX BRAND  
www.tigerholm.com